

**ANNUAL PROCUREMENT PLAN FOR 2019
For Common-Use Supplies and Equipment**

PROGRAM / UNIT:

Item & Specifications	Unit of Measure	Quantity Requirement																				Price Catalogue as of October 14, 2016	TOTAL AMOUNT	
		Jan	Feb	March	Q1	Q1 AMOUNT	April	May	June	Q2	Q2 AMOUNT	July	Aug	Sept	Q3	Q3 AMOUNT	Oct	Nov	Dec	Q4	Q4 AMOUNT			Total Quantity
A. AVAILABLE AT PROCUREMENT SERVICE STORES																								
COMMON ELECTRICAL SUPPLIES																								
1 BATTERY, dry cell AA, 2 pieces per blister pack	pack	24	12	12	48	836.16	24	12	12	48	836.16	24	12	12	48	836.16	24	12	12	48	836.16	192	17.42	3,344.64
2 BATTERY, dry cell AAA, 2 pieces per blister pack	pack	27	15	15	57	856.71	25	15	15	55	826.65	24	15	15	54	811.62	24	15	15	54	811.62	220	15.03	3,306.60
3 BATTERY, dry cell D, 2 pieces per blister pack	pack	10	-	-	10	775.6	10	-	-	10	775.6	10	-	-	10	775.6	10	-	-	10	775.6	40	77.56	3,102.40
4 FLUORESCENT LAMP, tubular, 28 watts	tube	101	-	-	101	11554	1	-	-	1	114.4	1	-	-	1	114.4	1	-	-	1	114.4	104	114.40	11,897.60
5 FLUORESCENT LAMP, tubular, 36 watts	tube	201	-	-	201	56441	-	-	-	0	0	-	-	-	0	0	-	-	-	0	0	201	280.80	56,440.80
6 COMPACT FLUORESCENT LAMP, 18 watts, 1 piece in individual box	piece	100	-	-	100	10379	-	-	-	0	0	-	-	-	0	0	-	-	-	0	0	100	103.79	10,379.00
7 TAPE, electrical	roll	25	-	-	25	455	24	-	-	24	436.8	25	-	-	25	455	24	-	-	24	436.8	98	18.20	1,783.60
COMMON OFFICE SUPPLIES																								
1 ACETATE, gauge #3, 50m per roll	roll	-	-	1	1	624	-	-	-	0	0	-	-	-	0	0	-	-	-	0	0	1	624.00	624.00
2 AIR FRESHENER, 280mL/150g min	can	43	31	26	100	8320	32	31	26	89	7404.8	42	31	26	99	8236.8	32	31	26	89	7404.8	377	83.20	31,366.40
3 ALCOHOL, 70%, ethyl, 500ml	bottle	47	23	23	93	4447.3	47	22	21	90	4303.8	47	22	24	93	4447.3	47	22	21	90	4303.8	366	47.82	17,502.12
4 CARBON FILM, A4 size, 100 sheets per box	box	4	2	2	8	1580.6	2	2	2	6	1185.5	3	2	2	7	1383.1	2	2	2	6	1185.5	27	197.58	5,334.66
5 CARBON FILM, PE, black, 216mm x 30mm, 100 sheets per box	box	8	3	4	15	3042	6	3	3	12	2433.6	7	3	3	13	2636.4	6	3	3	12	2433.6	52	202.80	10,545.60
6 CARTOLINA, assorted color, 20 pieces per pack	pack	83	139	20	242	15604	33	115	17	165	10639	50	115	17	182	11735	32	117	15	164	10575	753	64.48	48,553.44
7 CHALK, white, enamel, 100 pieces per box	box	12	-	-	12	310.32	-	-	-	0	0	-	-	-	0	0	-	-	-	0	0	12	25.86	310.32
8 CLEARBOOK, A4 size	piece	23	32	10	65	2568.8	19	10	10	39	1541.3	19	10	10	39	1541.3	19	10	10	39	1541.3	182	39.52	7,192.64
9 CLEARBOOK, Legal size	piece	37	10	11	58	2533.4	34	10	11	55	2402.4	35	10	11	56	2446.1	18	10	11	39	1703.5	208	43.68	9,085.44
10 CLIP, backfold, 19mm, 12 pieces per box	box	53	-	-	53	385.84	37	-	5	42	305.76	50	-	-	50	364	37	2	-	39	283.92	184	7.28	1,339.52
11 CLIP, backfold, 25mm, 12 pieces per box	box	44	55	8	107	1112.8	21	55	8	84	873.6	46	55	8	109	1133.6	22	57	8	87	904.8	387	10.40	4,024.80
12 CLIP, backfold, 32mm, 12 pieces per box	box	47	7	9	63	1204.6	26	7	9	42	803.04	44	7	9	60	1147.2	22	9	9	40	764.8	205	19.12	3,919.60

13	CLIP, backfold, 50mm, 12 pieces per box	box	83	1	3	87	3165.1	60	1	3	64	2328.3	83	1	3	87	3165.1	56	3	3	62	2255.6	300	36.38	10,914.00
14	CORRECTION TAPE, 6 meters(min), 1 piece in individual plastic	piece	677	595	514	1786	55723	662	580	449	1691	52759	662	580	449	1691	52759	672	570	449	1691	52759	6859	31.20	214,000.80
15	DATA FILE BOX, made with chipboard, with closed ends	box	100	10	26	136	9490.1	55	10	15	80	5582.4	45	10	15	70	4884.6	80	10	15	105	7326.9	391	69.78	27,283.98
16	DATA FOLDER, made with chipboard, taglia lock	piece	36	-	-	36	2471	31	-	5	36	2471	31	-	-	31	2127.8	36	-	-	36	2471	139	68.64	9,540.96
17	ENVELOPE, DOCUMENTARY, for A4 size document, 500 pieces per box	box	9	2	-	11	4196.9	1	1	-	2	763.08	2	1	-	3	1144.6	1	1	-	2	763.08	18	381.54	6,867.72
18	ENVELOPE, DOCUMENTARY, for Legal size document, 500 pieces per box	box	25	5	-	30	15222	12	2	-	14	7103.6	16	3	-	19	9640.6	12	2	-	14	7103.6	77	507.40	39,069.80
19	ENVELOPE, EXPANDING, KRAFTBOARD, for legal size documents, 100 pieces per box	box	28	6	5	39	24247	23	5	5	33	20516	24	5	5	34	21138	23	5	5	33	20516	139	621.71	86,417.69
20	ENVELOPE, EXPANDING, plastic	piece	231	224	157	612	16897	661	390	644	1695	46799	306	242	222	770	21260	721	234	432	1387	38295	4464	27.61	123,251.04
21	ENVELOPE, MAILING, 500 pieces per box, 80 gsm	box	5	4	4	13	6489.6	4	4	4	12	5990.4	5	4	4	13	6489.6	4	4	4	12	5990.4	50	499.20	24,960.00
22	ENVELOPE, MAILING, with window, 500 pieces per box, 80 gsm	box	7	2	2	11	6177.6	5	2	2	9	5054.4	4	2	3	9	5054.4	3	3	2	8	4492.8	37	561.60	20,779.20
23	ERASER, felt, for blackboard/whiteboard	piece	12	-	-	12	133.32	12	-	-	12	133.32	10	-	-	10	111.1	10	-	-	10	111.1	44	11.11	488.84
24	ERASER, plastic or rubber	piece	50	10	-	60	137.4	24	1	15	40	91.6	37	1	-	38	87.02	22	1	-	23	52.67	161	2.29	368.69
25	FASTENER, for paper, metal, 50 sets per box	box	163	25	29	217	12389	70	25	24	119	6793.7	147	25	24	196	11190	62	25	24	111	6337	643	57.09	36,708.87
26	FILE ORGANIZER, expanding, legal, plastic, assorted colors	piece	37	15	16	68	4805.6	62	15	15	92	6501.6	72	16	15	103	7279	27	15	15	57	4028.2	320	70.67	22,614.40
27	FILE TAB DIVIDER, A4, five (5) col	set	48	1	1	50	624	9	1	1	11	137.28	38	1	1	40	499.2	3	1	1	5	62.4	106	12.48	1,322.88
28	FILE TAB DIVIDER, Legal Size, five(5) colors per set	set	43	21	1	65	1081.6	8	21	1	30	499.2	38	21	1	60	998.4	3	21	1	25	416	180	16.64	2,995.20
29	FOLDER, Fancy, A4, 50s/ bundle	bundle	33	21	-	54	12636	1	-	-	1	234	2	-	-	2	468	2	-	-	2	468	59	234.00	13,806.00
30	FOLDER, Fancy, Legal, 50 pieces per bundle	bundle	37	27	5	69	20093	7	5	5	17	4950.4	7	6	5	18	5241.6	6	5	5	16	4659.2	120	291.20	34,944.00
31	FOLDER, L-type, A4, 50 pieces pack	pack	12	2	2	16	2662.4	11	2	2	15	2496	3	2	2	7	1164.8	3	2	2	7	1164.8	45	166.40	7,488.00
32	FOLDER, L-type, Legal size, 50 pieces per pack	pack	14	2	2	18	3669.1	10	2	2	14	2853.8	2	2	2	6	1223	2	2	2	6	1223	44	203.84	8,968.96
33	FOLDER, Pressboard, size 240mm x 370mm, 100s/box	box	14	14	4	32	23895	8	14	4	26	19415	10	14	4	28	20908	8	14	4	26	19415	112	746.72	83,632.64
34	FOLDER, Tagboard, A4, 100 pieces per pack	pack	10	-	-	10	1792.8	1	-	-	1	179.28	1	-	-	1	179.28	1	-	-	1	179.28	13	179.28	2,330.64
35	FOLDER, Tagboard, Legal size, 100 pieces per pack	pack	39	4	3	46	9217	20	4	3	27	5410	34	4	3	41	8215.2	10	4	3	17	3406.3	131	200.37	26,248.47
36	GLUE, all purpose, 300 grams min.	jar	186	244	109	539	23813	130	224	110	464	20500	184	224	108	516	22797	130	224	108	462	20411	1981	44.18	87,520.58
37	INDEX TAB, self-adhesive, 5 set/box, assorted colors	box	71	13	-	84	4023.6	2	3	-	5	239.5	34	3	-	37	1772.3	2	3	-	5	239.5	131	47.90	6,274.90

38	LOOSELEAF COVER, 50sets per bundle	bundle	-	-	-	0	0	-	-	-	0	0	-	-	-	0	0	-	-	-	0	0	0	539.76	-
39	MAGAZINE FILE BOX, LARGE	piece	143	29	15	187	7779.2	76	8	5	89	3702.4	88	7	15	110	4576	61	8	5	74	3078.4	460	41.60	19,136.00
40	MARKER, fluorescent, 3 colors per set	set	139	51	32	222	7892.1	69	31	34	134	4763.7	120	31	30	181	6434.6	67	31	30	128	4550.4	665	35.55	23,640.75
41	MARKER, whiteboard, bullet type, black	piece	261	389	195	845	8686.6	200	392	192	784	8059.5	246	389	189	824	8470.7	215	389	189	793	8152	3246	10.28	33,368.88
42	MARKER, whiteboard, bullet type, blue	piece	25	-	-	25	257	4	-	-	4	41.12	24	-	-	24	246.72	1	-	-	1	10.28	54	10.28	555.12
43	MARKER, whiteboard, bullet type, red	piece	8	-	-	8	82.24	5	-	-	5	51.4	4	-	-	4	41.12	1	-	-	1	10.28	18	10.28	185.04
44	MARKER, permanent, bullet type, black	piece	369	236	230	835	8057.8	274	237	257	768	7411.2	336	237	222	795	7671.8	276	207	228	711	6861.2	3109	9.65	30,001.85
45	MARKER, permanent, bullet type, blue	piece	63	3	11	77	743.05	7	2	1	10	96.5	32	3	2	37	357.05	9	2	3	14	135.1	138	9.65	1,331.70
46	MARKER, permanent, bullet type, red	piece	1	5	6	12	115.8	1	5	-	6	57.9	1	5	-	6	57.9	1	5	-	6	57.9	30	9.65	289.50
47	NOTE BOOK, stenographer's, 40 leaves, spiral	piece	378	72	131	581	6042.4	118	238	287	643	6687.2	423	80	150	653	6791.2	219	340	365	924	9609.6	2801	10.40	29,130.40
48	NOTE PAD, stick-on, (2"x3"), 100 sheets per pad	pad	261	78	106	445	13884	209	56	66	331	10327	145	56	56	257	8018.4	118	56	66	240	7488	1273	31.20	39,717.60
49	NOTE PAD, stick-on, (3"x3"), 100 sheets per pad	pad	233	70	38	341	13824	190	40	38	268	10865	122	43	38	203	8229.6	104	43	38	185	7499.9	997	40.54	40,418.38
50	NOTE PAD, stick-on, (3"x4"), 100 sheets per pad	pad	86	43	25	154	8325.2	46	43	20	109	5892.5	64	43	40	147	7946.8	54	43	20	117	6325	527	54.06	28,489.62
51	PAD PAPER, Ruled	pad	25	-	-	25	456.5	5	-	-	5	91.3	20	-	-	20	365.2	-	-	-	0	0	50	18.26	913.00
52	PAPER CLIP, gem type, 48mm, 100 pieces per box	box	334	237	215	786	10100	268	217	215	700	8995	318	217	215	750	9637.5	250	217	215	682	8763.7	2918	12.85	37,496.30
53	PAPER CLIP, gem type, 32mm, 100 pieces per box	box	290	212	192	694	4462.4	213	191	189	593	3813	307	191	189	687	4417.4	219	191	189	599	3851.6	2573	6.43	16,544.39
54	PAPER, MULTICOPY, 80gsm, size: 210mm x 297mm	ream	167	108	140	415	52145	141	153	143	437	54909	198	113	123	434	54532	145	123	113	381	47873	1667	125.65	209,458.55
55	PAPER, MULTICOPY, 80gsm, size: 216mm x 330mm	ream	149	56	71	276	41902	239	236	236	711	107944	214	161	161	536	81376	163	161	163	487	73936	2010	151.82	305,158.20
56	PAPER, Multi-Purpose (COPY) A4, 70gsm	ream	614	379	332	1325	152508	509	376	329	1214	139731	599	376	329	1304	150090	509	376	329	1214	139731	5057	115.10	582,060.70
57	PAPER, Multi-Purpose (COPY), Legal size, 70gsm	ream	666	492	453	1611	202036	634	491	439	1564	196141	664	491	451	1606	201408	624	491	439	1554	194887	6335	125.41	794,472.35
58	PARCHMENT PAPER, A4 size, 80 gsm, 100 sheets per pack]	ream	5	-	6	11	972.4	-	10	10	20	1768	3	-	1	4	353.6	-	1	-	1	88.4	36	88.40	3,182.40
59	PAPER, Thermal, 216mm x 30m	roll	17	2	2	21	654.15	17	2	2	21	654.15	17	2	2	21	654.15	17	2	2	21	654.15	84	31.15	2,616.60
60	PENCIL, lead, w/eraser, one(1) dozen per box	box	115	26	30	171	3355	64	26	26	116	2275.9	90	26	26	142	2786	57	26	25	108	2119	537	19.62	10,535.94
61	PHILIPPINE NATIONAL FLAG	piece	-	2	-	2	557.44	-	2	-	2	557.44	-	2	-	2	557.44	-	2	-	2	557.44	8	278.72	2,229.76
62	RECORD BOOK, 300 pages, size: 214mm x 278mm min	book	127	17	16	160	9651.2	33	18	16	67	4041.4	87	17	16	120	7238.4	33	18	16	67	4041.4	414	60.32	24,972.48
63	RECORD BOOK, 500 pages, size: 214mm x 278mm min	book	94	16	12	122	10596	61	16	13	90	7816.5	56	16	12	84	7295.4	41	16	12	69	5992.7	365	86.85	31,700.25
64	RING BINDER, Plastic 32mm, 10 pieces per bundle	bundle	9	5	5	19	4880.5	7	6	5	18	4623.7	7	5	5	17	4366.8	7	5	5	17	4366.8	71	256.87	18,237.77
65	RUBBER BAND, 70mm min lay flat length (#18)	box	18	4	1	23	2146.1	2	3	1	6	559.86	3	3	1	7	653.17	2	3	1	6	559.86	42	93.31	3,919.02
66	RULER, plastic, 450mm, 1 piece in individual plastic	piece	135	15	13	163	2523.2	13	5	6	24	371.52	12	9	6	27	417.96	9	9	13	31	479.88	245	15.48	3,792.60

7	DOCUMENT CAMERA, four(4) reference points demarcate viewing area, 16x(1600%) consecutive zoom, PC and Doc Cam video switcher, plug and play	unit	1	-	-	1	25272	-	-	-	0	0	-	-	-	0	0	-	-	0	0	1	25,272.00	25,272.00	
8	ELECTRIC FAN, industrial	unit	18	-	-	18	17222	-	-	-	0	0	-	-	-	0	0	-	-	-	0	0	18	956.80	17,222.40
9	ELECTRIC FAN, orbit type	unit	6	-	-	6	7488	-	-	-	0	0	-	-	-	0	0	-	-	-	0	0	6	1,248.00	7,488.00
10	ELECTRIC FAN, stand type	unit	8	-	-	8	7736.8	-	-	-	0	0	-	-	-	0	0	-	-	-	0	0	8	967.10	7,736.80
11	ELECTRIC FAN, wall type	unit	6	-	-	6	4742.4	-	-	-	0	0	-	-	-	0	0	-	-	-	0	0	6	790.40	4,742.40
12	FACSIMILE MACHINE, uses thermal paper, 50m/roll, for documents 216mm x 600mm, 15 sec, transmission speed, running width 2018mm, document feeder holds 10 pages, with automatic paper cutter, redial, and fax/tel switchove	unit	-	-	-	0	0	-	-	-	0	0	-	-	-	0	0	-	-	-	0	0	0	3,502.72	-
13	FIRE EXTINGUISHER, dry chemical, for ABC class of fire, stored pressure type, non-electrical conductor, non-toxic, non-corrosive, 4.5kg (10lbs.), brand new	unit	102	-	-	102	110217	1	-	-	1	1080.6	1	-	-	1	1080.6	1	-	-	1	1080.6	105	1,080.56	113,458.80
14	FIRE EXTINGUISHER, pure HCFC 123, with fire rating of 1A, 1BC, for ABC class of fire, stored pressure type, non-electrical conductor, non-corrosive, 4.5kg (10 lbs), brand new	unit	100	-	-	100	499200	-	-	-	0	0	-	-	-	0	0	-	-	-	0	0	100	4,992.00	499,200.00
15	MULTIMEDIA PROJECTOR, 4000 ansi Lumens, 3600 hours lamp life, supports SVGA to SXGA, (compressed) resolution	unit	1	-	-	1	26484	-	-	-	0	0	-	-	-	0	0	-	-	-	0	0	1	26,483.60	26,483.60
16	PAPER TRIMMER/CUTTING MACHINE, max paper size: B4, 30 sheets cutting cap., automatic clamping, stationary blade guard, A4-A6 format indications	unit	1	-	-	1	7488	-	-	-	0	0	-	-	-	0	0	-	-	-	0	0	1	7,488.00	7,488.00
17	PAPER SHREDDER, 0.06m/sec shred speed, cuts 6-8 sheets of 70gsm paper	unit	2	-	-	2	11398	-	-	-	0	0	-	-	-	0	0	-	-	-	0	0	2	5,699.20	11,398.40
18	PRINTER, IMPACT DOT MATRIX, 24 pins, 136 column, 480 cps print speed	unit	3	-	-	3	56129	-	-	-	0	0	-	-	-	0	0	-	-	-	0	0	3	18,709.60	56,128.80
19	PRINTER, IMPACT DOT MATRIX, 9 pins, 80 column, 337 cps print speed	unit	3	-	-	3	17495	-	-	-	0	0	-	-	-	0	0	-	-	-	0	0	3	5,831.52	17,494.56

20	PRINTER, INKJET, wireless capable, 55ppm speed, 512MB memory, duplex printing capable	unit	3	-	-	3	30000	-	-	-	0	0	-	-	-	0	0	-	-	-	0	0	3	10,000.00	30,000.00		
21	PRINTER, LASER, monochrome, 24ppm speed, 1200 x 1200 dpi	unit	3	2	-	5	6188	-	1	-	1	1237.6	-	2	-	2	2475.2	-	1	-	1	1237.6	9	1,237.60	11,138.40		
22	TABLE, monobloc, square, 36" X 36", white, four(4) seater, for indoor and outdoor use	unit	-	-	-	0	0	-	-	-	0	0	-	-	-	0	0	-	-	-	0	0	0	1,289.60	-		
23	TABLE, monobloc, square, 36" X 36", beige, four(4) seater, for indoor and outdoor use	unit	30	-	-	30	38688	-	-	-	0	0	-	-	-	0	0	-	-	-	0	0	30	1,289.60	38,688.00		
24	Desktop and Laptop	unit	4	-	-	4	0	-	-	-	0	0	-	-	-	0	0	-	-	-	0	0	4		-		
COMMON COMPUTER SUPPLIES																											
1	COMPUTER CONTINUOUS FORMS, 1 ply, 11" x 9-1/2", 2000 sheets/box	box	-	-	2	2	1261.5	-	-	2	2	1261.5	-	-	2	2	1261.5	-	-	2	2	1261.5	8	630.76	5,046.08		
2	COMPUTER CONTINUOUS FORMS, 1 ply, 11" x 14-7/8", 2000 sheets/box	box	-	-	2	2	1900.6	-	-	2	2	1900.6	-	-	2	2	1900.6	-	-	2	2	1900.6	8	950.30	7,602.40		
3	COMPUTER CONTINUOUS FORMS, 2 ply, 11" x 9-1/2", 1000 sets/box	box	-	-	-	0	0	-	-	-	0	0	-	-	-	0	0	-	-	-	0	0	0	716.04	-		
4	COMPUTER CONTINUOUS FORMS, 2 ply, 11" x 14-7/8", 1000 sets/box	box	-	-	-	0	0	-	-	-	0	0	-	-	-	0	0	-	-	-	0	0	0	1,220.96	-		
5	COMPUTER CONTINUOUS FORMS, 3 ply, 11 x 9-1/2", 500 sets/box	box	-	-	2	2	1193.6	-	-	2	2	1193.6	-	-	2	2	1193.6	-	-	2	2	1193.6	8	596.80	4,774.40		
6	COMPUTER CONTINUOUS FORMS, 3 ply, 11" x 14-7/8", 500 sets/box	box	-	-	2	2	1916.3	-	-	2	2	1916.3	-	-	2	2	1916.3	-	-	2	2	1916.3	8	958.15	7,665.20		
7	DVD REWRITABLE, 4x speed, 4.7GB capacity	piece	101	1	6	108	2353.3	1	1	6	8	174.32	101	1	6	108	2353.3	1	1	6	8	174.32	232	21.79	5,055.28		
8	EXTERNAL HARD DRIVE, 1TB, 2.5" HDD, USB 3.0, backward compatible with USB 2.0, 5400 rpm, with dual color LED light to indicate USB 3.0/USB 2.0 transmission, USB powered, System Requirements: USB 3.0: Windows XP/Vista/7/MacOSx 10.4 or above, with USB 3.0 cable and product guide	piece	12	1	3	16	45094	1	2	-	3	8455.2	-	1	-	1	2818.4	-	1	-	1	2818.4	21	2,818.40	59,186.40		
9	FLASH DRIVE, 16GB, USB 2.0, plug and play	piece	86	3	23	112	21782	-	1	3	4	777.92	3	2	6	11	2139.3	-	2	-	2	388.96	129	194.48	25,087.92		
10	MOUSE, optical, USB connection type	unit	22	3	1	26	3322.8	9	2	-	11	1405.8	10	-	-	10	550	8	-	-	8	1022.4	55	127.80	7,029.00		
HANDBOOK ON PROCUREMENT																											

1	HANDBOOK ON PHILIPPINE GOVERNMENT PROCUREMENT- RA 9184(6th Edition), 6" x 9", 296 pages,	piece	56	-	-	56	3462.5	-	-	-	0	0	-	-	0	0	-	-	0	0	56	61.83	3,462.48		
CONSUMABLES																									
1	INK CART, BROTHER LC39BK, Black	cart	-	-	-	0	0	-	-	-	0	0	-	-	-	0	0	-	-	-	0	0	0	681.20	-
2	INK CART, BROTHER LC39C, Cyan	cart	-	-	-	0	0	-	-	-	0	0	-	-	-	0	0	-	-	-	0	0	0	447.20	-
3	INK CART, BROTHER LC39M, Magenta	cart	-	-	-	0	0	-	-	-	0	0	-	-	-	0	0	-	-	-	0	0	0	447.20	-
4	INK CART, BROTHER LC39Y, Yellow	cart	-	-	-	0	0	-	-	-	0	0	-	-	-	0	0	-	-	-	0	0	0	447.20	-
5	INK CART, BROTHER LC67B, Black	cart	-	-	-	0	0	-	-	-	0	0	-	-	-	0	0	-	-	-	0	0	0	910.00	-
6	INK CART, BROTHER LC67C, Cyan	cart	-	-	-	0	0	-	-	-	0	0	-	-	-	0	0	-	-	-	0	0	0	546.00	-
7	INK CART, BROTHER LC67M, Magenta	cart	-	-	-	0	0	-	-	-	0	0	-	-	-	0	0	-	-	-	0	0	0	546.00	-
8	INK CART, BROTHER LC67Y, Yellow	cart	-	-	-	0	0	-	-	-	0	0	-	-	-	0	0	-	-	-	0	0	0	546.00	-
9	INK CART, BROTHER LC67HYBK, Black	cart	-	-	-	0	0	-	-	-	0	0	-	-	-	0	0	-	-	-	0	0	0	1,538.16	-
10	INK CART, BROTHER LC67HYC, Cyan	cart	-	-	-	0	0	-	-	-	0	0	-	-	-	0	0	-	-	-	0	0	0	868.40	-
11	INK CART, BROTHER LC67HYM, Magenta	cart	-	-	-	0	0	-	-	-	0	0	-	-	-	0	0	-	-	-	0	0	0	868.40	-
12	INK CART, BROTHER LC67HYY, Yellow	cart	-	-	-	0	0	-	-	-	0	0	-	-	-	0	0	-	-	-	0	0	0	868.40	-
13	INK CART, CANON PG-810, Black	cart	5	5	5	15	11622	5	5	5	15	11622	5	5	5	15	11622	5	5	5	15	11622	60	774.80	46,488.00
14	INK CART, CANON PG-740, Black	cart	-	-	-	0	0	-	-	-	0	0	-	-	-	0	0	-	-	-	0	0	0	754.00	-
15	INK CART, CANON PGI-725, Black	cart	-	-	-	0	0	-	-	-	0	0	-	-	-	0	0	-	-	-	0	0	0	574.08	-
16	INK CART, CANON CLI-726, Black	cart	-	-	-	0	0	-	-	-	0	0	-	-	-	0	0	-	-	-	0	0	0	534.56	-
17	INK CART, CANON CL-811, Colored	cart	5	5	5	15	15335	5	5	5	15	15335	5	5	5	15	15335	5	5	5	15	15335	60	1,022.32	61,339.20
18	INK CART, CANON CL-741, Colored	cart	-	-	-	0	0	-	-	-	0	0	-	-	-	0	0	-	-	-	0	0	0	1,001.52	-
19	INK CART, CANON CLI-726, Cyan	cart	-	-	-	0	0	-	-	-	0	0	-	-	-	0	0	-	-	-	0	0	0	535.60	-
20	INK CART, CANON CLI-726, Magenta	cart	-	-	-	0	0	-	-	-	0	0	-	-	-	0	0	-	-	-	0	0	0	535.60	-
21	INK CART, CANON CLI-726, Yellow	cart	-	-	-	0	0	-	-	-	0	0	-	-	-	0	0	-	-	-	0	0	0	535.60	-
22	INK CART, EPSON C13T038190 (To 38), Black	cart	-	-	-	0	0	-	-	-	0	0	-	-	-	0	0	-	-	-	0	0	0	491.92	-
23	INK CART, EPSON C13T039090 (To 39), Colored	cart	-	-	-	0	0	-	-	-	0	0	-	-	-	0	0	-	-	-	0	0	0	770.64	-
24	INK CART, EPSON C13T105190(73N)/(91N),Black	cart	-	-	-	0	0	-	-	-	0	0	-	-	-	0	0	-	-	-	0	0	0	426.40	-

25	INK CART, EPSON C13T105290(73N)/(91N),Cyan	cart	-	-	-	0	0	-	-	-	0	0	-	-	-	0	0	-	-	-	0	0	0	426.40	-
26	INK CART, EPSON C13T105390(73N)/(91N),Magenta	cart	-	-	-	0	0	-	-	-	0	0	-	-	-	0	0	-	-	-	0	0	0	426.40	-
27	INK CART, EPSON C13T105490(73N)/(91N),Yellow	cart	-	-	-	0	0	-	-	-	0	0	-	-	-	0	0	-	-	-	0	0	0	426.40	-
28	INK CART, EPSON C13T6664100 (T6641), Black	cart	-	-	-	0	0	-	-	-	0	0	-	-	-	0	0	-	-	-	0	0	0	254.80	-
29	INK CART, EPSON C13T664200 (T6642), Cyan	cart	-	-	-	0	0	-	-	-	0	0	-	-	-	0	0	-	-	-	0	0	0	254.80	-
30	INK CART, EPSON C13T664300 (T6643), Magenta	cart	-	-	-	0	0	-	-	-	0	0	-	-	-	0	0	-	-	-	0	0	0	254.80	-
31	INK CART, EPSON C13T664400 (T6644), Yellow	cart	-	-	-	0	0	-	-	-	0	0	-	-	-	0	0	-	-	-	0	0	0	254.80	-
32	INK CART, HP 51645A, (HP45), Black	cart	-	-	-	0	0	-	-	-	0	0	-	-	-	0	0	-	-	-	0	0	0	1,346.80	-
33	INK CART, HP C1823A, (HP23), Tri-color	cart	-	-	-	0	0	-	-	-	0	0	-	-	-	0	0	-	-	-	0	0	0	1,612.00	-
34	INK CART, HP C4844A, (HP10), Black	cart	-	-	-	0	0	-	-	-	0	0	-	-	-	0	0	-	-	-	0	0	0	1,554.80	-
35	INK CART, HP C4906AA, (HP940XL), Black	cart	-	-	-	0	0	-	-	-	0	0	-	-	-	0	0	-	-	-	0	0	0	1,554.80	-
36	INK CART, HP C4907AA, (HP940XL), Cyan	cart	-	-	-	0	0	-	-	-	0	0	-	-	-	0	0	-	-	-	0	0	0	1,034.80	-
37	INK CART, HP C4908AA, (HP940XL), Magenta	cart	-	-	-	0	0	-	-	-	0	0	-	-	-	0	0	-	-	-	0	0	0	1,034.80	-
38	INK CART, HP C4909AA, (HP940XL), Yellow	cart	-	-	-	0	0	-	-	-	0	0	-	-	-	0	0	-	-	-	0	0	0	1,034.80	-
39	INK CART, HP C4936A, (HP18), Black	cart	-	-	-	0	0	-	-	-	0	0	-	-	-	0	0	-	-	-	0	0	0	982.80	-
40	INK CART, HP C4937A, (HP18), Cyan	cart	-	-	-	0	0	-	-	-	0	0	-	-	-	0	0	-	-	-	0	0	0	717.60	-
41	INK CART, HP C4938A, (HP18), Magenta	cart	-	-	-	0	0	-	-	-	0	0	-	-	-	0	0	-	-	-	0	0	0	717.60	-
42	INK CART, HP C4939A, (HP18), Yellow	cart	-	-	-	0	0	-	-	-	0	0	-	-	-	0	0	-	-	-	0	0	0	717.60	-
43	INK CART, HP C6578DA, (HP78), Tri-color	cart	-	-	-	0	0	-	-	-	0	0	-	-	-	0	0	-	-	-	0	0	0	1,606.80	-
44	INK CART, HP C6615DA, (HP15), Black	cart	-	-	-	0	0	-	-	-	0	0	-	-	-	0	0	-	-	-	0	0	0	1,237.60	-
45	INK CART, HP C6625AA, (HP17), Tri-color	cart	-	-	-	0	0	-	-	-	0	0	-	-	-	0	0	-	-	-	0	0	0	1,346.80	-
46	INK CART, HP C6656AA, (HP56), Black	cart	-	-	-	0	0	-	-	-	0	0	-	-	-	0	0	-	-	-	0	0	0	921.44	-
47	INK CART, HP C6657AA, (HP57), Tri-color	cart	-	-	-	0	0	-	-	-	0	0	-	-	-	0	0	-	-	-	0	0	0	1,466.40	-
48	INK CART, HP C8727AA, (HP27), Black	cart	-	-	-	0	0	-	-	-	0	0	-	-	-	0	0	-	-	-	0	0	0	826.80	-
49	INK CART, HP C8765WA, (HP94), Black	cart	-	-	-	0	0	-	-	-	0	0	-	-	-	0	0	-	-	-	0	0	0	930.80	-
50	INK CART, HP C8766WA, (HP95), Tri-color	cart	2	2	1	5	5668	2	2	1	5	5668	2	2	1	5	5668	2	2	1	5	5668	20	1,133.60	22,672.00
51	INK CART, HP C8767WA, (HP96), Black	cart	-	-	-	0	0	-	-	-	0	0	-	-	-	0	0	-	-	-	0	0	0	1,430.00	-

52	INK CART, HP C9351AA, (HP21), Black	cart	-	-	-	0	0	-	-	-	0	0	-	-	-	0	0	-	-	-	0	0	0	650.00	-
53	INK CART, HP C9352AA, (HP22), Tri-color	cart	-	-	-	0	0	-	-	-	0	0	-	-	-	0	0	-	-	-	0	0	0	751.92	-
54	INK CART, HP C9361WA, (HP93), Tri-color	cart	-	-	-	0	0	-	-	-	0	0	-	-	-	0	0	-	-	-	0	0	0	1,346.80	-
55	INK CART, HP C9362WA, (HP92), Black	cart	-	-	-	0	0	-	-	-	0	0	-	-	-	0	0	-	-	-	0	0	0	600.08	-
56	INK CART, HP C9363WA, (HP97), Tri-color	cart	-	-	-	0	0	-	-	-	0	0	-	-	-	0	0	-	-	-	0	0	0	1,492.40	-
57	INK CART, HP C9364WA, (HP98), Black	cart	2	2	1	5	4134	2	2	1	5	4134	2	2	1	5	4134	2	2	1	5	4134	20	826.80	16,536.00
58	INK CART, HP CB314A, (HP900), Black	cart	-	-	-	0	0	-	-	-	0	0	-	-	-	0	0	-	-	-	0	0	0	296.40	-
59	INK CART, HP CB315A, (HP900), Tri-color	cart	-	-	-	0	0	-	-	-	0	0	-	-	-	0	0	-	-	-	0	0	0	379.60	-
60	INK CART, HP CB335WA, (HP74), Black	cart	-	-	-	0	0	-	-	-	0	0	-	-	-	0	0	-	-	-	0	0	0	696.80	-
61	INK CART, HP CB336WA, (HP74XL), Black	cart	-	-	-	0	0	-	-	-	0	0	-	-	-	0	0	-	-	-	0	0	0	1,508.00	-
62	INK CART, HP CB337WA, (HP75), Tri-color	cart	-	-	-	0	0	-	-	-	0	0	-	-	-	0	0	-	-	-	0	0	0	803.92	-
63	INK CART, HP CB338WA, (HP75XL), Tri-color	cart	-	-	-	0	0	-	-	-	0	0	-	-	-	0	0	-	-	-	0	0	0	1,606.80	-
64	INK CART, HP CC640WA, (HP60), Black	cart	-	-	-	0	0	-	-	-	0	0	-	-	-	0	0	-	-	-	0	0	0	639.60	-
65	INK CART, HP CC641WA, (HP60XL), Black	cart	-	-	-	0	0	-	-	-	0	0	-	-	-	0	0	-	-	-	0	0	0	1,445.60	-
66	INK CART, HP CC643WA, (HP60), Tri-color	cart	-	-	-	0	0	-	-	-	0	0	-	-	-	0	0	-	-	-	0	0	0	754.00	-
67	INK CART, HP CC644WA, (HP60XL), Tri-color	cart	-	-	-	0	0	-	-	-	0	0	-	-	-	0	0	-	-	-	0	0	0	1,658.80	-
68	INK CART, HP CC653AA, (HP901), Black	cart	-	-	-	0	0	-	-	-	0	0	-	-	-	0	0	-	-	-	0	0	0	639.60	-
69	INK CART, HP CC656AA, (HP901), Tri-color	cart	-	-	-	0	0	-	-	-	0	0	-	-	-	0	0	-	-	-	0	0	0	1,019.20	-
70	INK CART, HP CC660AA, (HP702), Black	cart	-	-	-	0	0	-	-	-	0	0	-	-	-	0	0	-	-	-	0	0	0	1,086.80	-
71	INK CART, HP CD887AA, (HP703), Black	cart	-	-	-	0	0	-	-	-	0	0	-	-	-	0	0	-	-	-	0	0	0	358.80	-
72	INK CART, HP CD888AA, (HP703), Tri-color	cart	-	-	-	0	0	-	-	-	0	0	-	-	-	0	0	-	-	-	0	0	0	358.80	-
73	INK CART, HP CD971AA, (HP 920), Black	cart	-	-	-	0	0	-	-	-	0	0	-	-	-	0	0	-	-	-	0	0	0	792.48	-
74	INK CART, HP CD972AA, (HP 920XL), Cyan	cart	-	-	-	0	0	-	-	-	0	0	-	-	-	0	0	-	-	-	0	0	0	629.20	-
75	INK CART, HP CD973AA, (HP 920XL), Magenta	cart	-	-	-	0	0	-	-	-	0	0	-	-	-	0	0	-	-	-	0	0	0	629.20	-
76	INK CART, HP CD974AA, (HP 920XL), Yellow	cart	-	-	-	0	0	-	-	-	0	0	-	-	-	0	0	-	-	-	0	0	0	629.20	-
77	INK CART, HP CD975AA, (HP 920XL), Black	cart	-	-	-	0	0	-	-	-	0	0	-	-	-	0	0	-	-	-	0	0	0	1,242.80	-
78	INK CART, HP CH561WA, (HP61), Black	cart	-	-	-	0	0	-	-	-	0	0	-	-	-	0	0	-	-	-	0	0	0	644.80	-
79	INK CART, HP CH562WA, (HP61), Tricolor	cart	-	-	-	0	0	-	-	-	0	0	-	-	-	0	0	-	-	-	0	0	0	826.80	-

80	INK CART, HP CN045AA, (HP950XL), Black	cart	-	-	-	0	0	-	-	-	0	0	-	-	-	0	0	-	-	-	0	0	0	1,554.80	-
81	INK CART, HP CN046AA, (HP951XL), Cyan	cart	-	-	-	0	0	-	-	-	0	0	-	-	-	0	0	-	-	-	0	0	0	1,175.20	-
82	INK CART, HP CN047AA, (HP951XL), Magenta	cart	-	-	-	0	0	-	-	-	0	0	-	-	-	0	0	-	-	-	0	0	0	1,180.40	-
83	INK CART, HP CN048AA, (HP951XL), Yellow	cart	-	-	-	0	0	-	-	-	0	0	-	-	-	0	0	-	-	-	0	0	0	1,180.40	-
84	INK CART, HP CN692AA, (HP704), Black	cart	-	-	-	0	0	-	-	-	0	0	-	-	-	0	0	-	-	-	0	0	0	358.80	-
85	INK CART, HP CN693AA, (HP704), Tri-color	cart	-	-	-	0	0	-	-	-	0	0	-	-	-	0	0	-	-	-	0	0	0	358.80	-
86	INK CART, HP CZ107AA, (HP678), Black	cart	-	-	-	0	0	-	-	-	0	0	-	-	-	0	0	-	-	-	0	0	0	358.80	-
87	INK CART, HP CZ108AA, (HP678), Tricolor	cart	-	-	-	0	0	-	-	-	0	0	-	-	-	0	0	-	-	-	0	0	0	360.88	-
88	INK CART, HP CZ121A (HP685A), Black	cart	-	-	-	0	0	-	-	-	0	0	-	-	-	0	0	-	-	-	0	0	0	366.08	-
89	INK CART, HP CZ122A (HP685A), Cyan	cart	-	-	-	0	0	-	-	-	0	0	-	-	-	0	0	-	-	-	0	0	0	249.60	-
90	INK CART, HP CZ123A (HP685A), Magenta	cart	-	-	-	0	0	-	-	-	0	0	-	-	-	0	0	-	-	-	0	0	0	249.60	-
91	INK CART, HP CZ124A (HP685A), Yellow	cart	-	-	-	0	0	-	-	-	0	0	-	-	-	0	0	-	-	-	0	0	0	249.60	-
92	INK CART, HP Q8893AA (C8728AA), (HP28), Colored	cart	-	-	-	0	0	-	-	-	0	0	-	-	-	0	0	-	-	-	0	0	0	930.80	-
93	INK CART, LEXMARK 10NO217 (#17), Black	cart	-	-	-	0	0	-	-	-	0	0	-	-	-	0	0	-	-	-	0	0	0	1,003.60	-
94	INK CART, LEXMARK 10NO227 (#27), Colored	cart	-	-	-	0	0	-	-	-	0	0	-	-	-	0	0	-	-	-	0	0	0	1,196.00	-
95	TONER CART, BROTHER TN-2025, Black	cart	-	-	-	0	0	-	-	-	0	0	-	-	-	0	0	-	-	-	0	0	0	2,556.32	-
96	TONER CART, BROTHER TN-2130, Black	cart	-	-	-	0	0	-	-	-	0	0	-	-	-	0	0	-	-	-	0	0	0	1,820.00	-
97	TONER CART, BROTHER TN-2150, Black	cart	-	-	-	0	0	-	-	-	0	0	-	-	-	0	0	-	-	-	0	0	0	2,860.00	-
98	TONER CART, BROTHER TN-3320, Black	cart	-	-	-	0	0	-	-	-	0	0	-	-	-	0	0	-	-	-	0	0	0	3,354.00	-
99	TONER CART, BROTHER TN-3350, Black, for HL5450DN (CU Printer)	cart	-	-	-	0	0	-	-	-	0	0	-	-	-	0	0	-	-	-	0	0	0	4,992.00	-
100	TONER CART, HP C4092A, Black	cart	-	-	-	0	0	-	-	-	0	0	-	-	-	0	0	-	-	-	0	0	0	2,741.44	-
101	TONER CART, HP C4096A, Black	cart	-	-	-	0	0	-	-	-	0	0	-	-	-	0	0	-	-	-	0	0	0	5,352.88	-
102	TONER CART, HP C7115A, Black	cart	-	-	-	0	0	-	-	-	0	0	-	-	-	0	0	-	-	-	0	0	0	2,971.28	-
103	TONER CART, HP CB435A, Black	cart	-	-	-	0	0	6	-	-	6	16817	3	-	-	3	8408.4	3	-	-	3	8408.4	12	2,802.80	33,633.60
104	TONER CART, HP CB436A, Black	cart	-	-	-	0	0	-	-	-	0	0	-	-	-	0	0	-	-	-	0	0	0	3,218.80	-
105	TONER CART, HP CB540A, Black	cart	-	-	-	0	0	-	-	-	0	0	-	-	-	0	0	-	-	-	0	0	0	3,312.40	-
106	TONER CART, HP CB541A, Cyan	cart	-	-	-	0	0	-	-	-	0	0	-	-	-	0	0	-	-	-	0	0	0	2,984.80	-
107	TONER CART, HP CB542A, Yellow	cart	-	-	-	0	0	-	-	-	0	0	-	-	-	0	0	-	-	-	0	0	0	2,984.80	-

108	TONER CART, HP CB543A, Magenta	cart	-	-	-	0	0	-	-	-	0	0	-	-	-	0	0	-	-	-	0	0	0	2,984.80	-
109	TONER CART, HP CC364A, Black	cart	-	-	-	0	0	-	-	-	0	0	-	-	-	0	0	-	-	-	0	0	0	7,378.80	-
110	TONER CART, HP CC530A, Black	cart	-	-	-	0	0	-	-	-	0	0	-	-	-	0	0	-	-	-	0	0	0	5,402.80	-
111	TONER CART, HP CC531A, Cyan	cart	-	-	-	0	0	-	-	-	0	0	-	-	-	0	0	-	-	-	0	0	0	5,298.80	-
112	TONER CART, HP CC532A, Yellow	cart	-	-	-	0	0	-	-	-	0	0	-	-	-	0	0	-	-	-	0	0	0	5,298.80	-
113	TONER CART, HP CC533A, Magenta	cart	-	-	-	0	0	-	-	-	0	0	-	-	-	0	0	-	-	-	0	0	0	5,298.80	-
114	TONER CART, HP CE255A, Black	cart	-	-	-	0	0	-	-	-	0	0	-	-	-	0	0	-	-	-	0	0	0	6,754.80	-
115	TONER CART, HP CE278A, Black	cart	21	15	16	52	161970	22	16	16	54	168199	22	16	16	54	168199	23	18	16	57	177544	217	3,114.80	675,911.60
116	TONER CART, HP CE285A (HP85A), Black	cart	16	5	8	29	79924	18	7	8	33	90948	18	7	8	33	90948	18	7	8	33	90948	128	2,756.00	352,768.00
117	TONER CART, HP CE310A, Black	cart	-	-	-	0	0	-	-	-	0	0	-	-	-	0	0	-	-	-	0	0	0	2,386.80	-
118	TONER CART, HP CE311A, Cyan	cart	-	-	-	0	0	-	-	-	0	0	-	-	-	0	0	-	-	-	0	0	0	2,490.80	-
119	TONER CART, HP CE312A, Yellow	cart	-	-	-	0	0	-	-	-	0	0	-	-	-	0	0	-	-	-	0	0	0	2,490.80	-
120	TONER CART, HP CE313A, Magenta	cart	-	-	-	0	0	-	-	-	0	0	-	-	-	0	0	-	-	-	0	0	0	2,490.80	-
121	TONER CART, HP CE320A, Black	cart	7	7	7	21	66503	7	7	7	21	66503	7	7	7	21	66503	7	7	7	21	66503	84	3,166.80	266,011.20
122	TONER CART, HP CE321A, Cyan	cart	7	7	7	21	63227	7	7	7	21	63227	7	7	7	21	63227	7	7	7	21	63227	84	3,010.80	252,907.20
123	TONER CART, HP CE322A, Yellow	cart	7	7	7	21	63227	7	7	7	21	63227	7	7	7	21	63227	7	7	7	21	63227	84	3,010.80	252,907.20
124	TONER CART, HP CE323A, Magenta	cart	7	7	7	21	63227	7	7	7	21	63227	7	7	7	21	63227	7	7	7	21	63227	84	3,010.80	252,907.20
125	TONER CART, HP CE390A, Black	cart	-	-	-	0	0	-	-	-	0	0	-	-	-	0	0	-	-	-	0	0	0	7,690.80	-
126	TONER CART, HP CE400A, Black	cart	-	-	-	0	0	-	-	-	0	0	-	-	-	0	0	-	-	-	0	0	0	6,754.80	-
127	TONER CART, HP CE401A, Cyan	cart	-	-	-	0	0	-	-	-	0	0	-	-	-	0	0	-	-	-	0	0	0	9,978.80	-
128	TONER CART, HP CE402A, Yellow	cart	-	-	-	0	0	-	-	-	0	0	-	-	-	0	0	-	-	-	0	0	0	9,978.80	-
129	TONER CART, HP CE403A, Magenta	cart	-	-	-	0	0	-	-	-	0	0	-	-	-	0	0	-	-	-	0	0	0	9,978.80	-
130	TONER CART, HP CE410A, (HP305), Black	cart	-	-	-	0	0	-	-	-	0	0	-	-	-	0	0	-	-	-	0	0	0	3,790.80	-
131	TONER CART, HP CE411A, (HP305), Cyan	cart	-	-	-	0	0	-	-	-	0	0	-	-	-	0	0	-	-	-	0	0	0	5,402.80	-
132	TONER CART, HP CE412A, (HP305), Yellow	cart	-	-	-	0	0	-	-	-	0	0	-	-	-	0	0	-	-	-	0	0	0	5,402.80	-
133	TONER CART, HP CE413A, (HP305), Magenta	cart	-	-	-	0	0	-	-	-	0	0	-	-	-	0	0	-	-	-	0	0	0	5,402.80	-
134	TONER CART, HP CE505A, Black	cart	13	10	5	28	111966	13	10	5	28	111966	13	10	5	28	111966	13	10	5	28	111966	112	3,998.80	447,865.60
135	TONER CART, HP CE505X, Black, high cap	cart	-	-	-	0	0	-	-	-	0	0	-	-	-	0	0	-	-	-	0	0	0	7,066.80	-
136	TONER CART, HP Q2612A, Black	cart	3	3	3	9	27940	3	4	3	10	31044	3	4	3	10	31044	3	4	3	10	31044	39	3,104.40	121,071.60

137	TONER CART, HP Q2613A, Black	cart	-	-	-	0	0	-	-	-	0	0	-	-	-	0	0	-	-	-	0	0	0	3,328.00	-
138	TONER CART, HP Q5942A, Black	cart	-	-	-	0	0	-	-	-	0	0	-	-	-	0	0	-	-	-	0	0	0	7,482.80	-
139	TONER CART, HP Q5949A, Black	cart	-	-	-	0	0	-	-	-	0	0	-	-	-	0	0	-	-	-	0	0	0	3,530.80	-
140	TONER CART, HP Q5950A, Black	cart	-	-	-	0	0	-	-	-	0	0	-	-	-	0	0	-	-	-	0	0	0	7,644.00	-
141	TONER CART, HP Q5951A, Cyan	cart	-	-	-	0	0	-	-	-	0	0	-	-	-	0	0	-	-	-	0	0	0	10,845.12	-
142	TONER CART, HP Q5952A, Yellow	cart	-	-	-	0	0	-	-	-	0	0	-	-	-	0	0	-	-	-	0	0	0	10,845.12	-
143	TONER CART, HP Q5953A, Magenta	cart	-	-	-	0	0	-	-	-	0	0	-	-	-	0	0	-	-	-	0	0	0	10,845.12	-
144	TONER CART, HP Q6000A, Black	cart	-	-	-	0	0	-	-	-	0	0	-	-	-	0	0	-	-	-	0	0	0	3,317.60	-
145	TONER CART, HP Q6001A, Cyan	cart	-	-	-	0	0	-	-	-	0	0	-	-	-	0	0	-	-	-	0	0	0	3,614.00	-
146	TONER CART, HP Q6002A, Yellow	cart	-	-	-	0	0	-	-	-	0	0	-	-	-	0	0	-	-	-	0	0	0	3,614.00	-
147	TONER CART, HP Q6003A, Magenta	cart	-	-	-	0	0	-	-	-	0	0	-	-	-	0	0	-	-	-	0	0	0	3,614.00	-
148	TONER CART, HP Q6470A, Black	cart	-	-	-	0	0	-	-	-	0	0	-	-	-	0	0	-	-	-	0	0	0	5,526.56	-
149	TONER CART, HP Q6471A, Cyan	cart	-	-	-	0	0	-	-	-	0	0	-	-	-	0	0	-	-	-	0	0	0	5,495.36	-
150	TONER CART, HP Q6472A, Yellow	cart	-	-	-	0	0	-	-	-	0	0	-	-	-	0	0	-	-	-	0	0	0	5,844.80	-
151	TONER CART, HP Q6473A, Magenta	cart	-	-	-	0	0	-	-	-	0	0	-	-	-	0	0	-	-	-	0	0	0	5,844.80	-
152	TONER CART, HP Q7553A, Black	cart	-	-	-	0	0	-	-	-	0	0	-	-	-	0	0	-	-	-	0	0	0	3,894.80	-
153	TONER CART, LEXMARK E360H11P, Black	cart	-	-	-	0	0	-	-	-	0	0	-	-	-	0	0	-	-	-	0	0	0	8,874.32	-
154	TONER CART, LEXMARK T650A11P, Black	cart	-	-	-	0	0	-	-	-	0	0	-	-	-	0	0	-	-	-	0	0	0	9,630.40	-
155	TONER CART, SAMSUNG ML-D2850B, Black	cart	-	-	-	0	0	-	-	-	0	0	-	-	-	0	0	-	-	-	0	0	0	4,992.00	-
156	TONER CART, SAMSUNG MLT-D101S, Black	cart	1	1	1	3	7800	1	1	1	3	7800	1	1	1	3	7800	1	1	1	3	7800	12	2,600.00	31,200.00
157	TONER CART, SAMSUNG MLT-D103L, Black	cart	-	-	-	0	0	-	-	-	0	0	-	-	-	0	0	-	-	-	0	0	0	2,912.00	-
158	TONER CART, SAMSUNG MLT-D103S, Black	cart	-	-	-	0	0	-	-	-	0	0	-	-	-	0	0	-	-	-	0	0	0	2,912.00	-
159	TONER CART, SAMSUNG MLT-D104S, Black	cart	5	3	3	11	26312	5	3	3	11	26312	5	3	3	11	26312	5	3	3	11	26312	44	2,392.00	105,248.00
160	TONER CART, SAMSUNG MLT-D105L, Black	cart	4	5	5	14	37856	5	5	5	15	40560	5	5	5	15	40560	5	5	5	15	40560	59	2,704.00	159,536.00
161	TONER CART, SAMSUNG MLT-D108S, Black	cart	-	-	-	0	0	-	-	-	0	0	-	-	-	0	0	-	-	-	0	0	0	2,631.20	-
162	TONER CART, SAMSUNG MLT-D119S(ML-2010D3), Black	cart	5	5	5	15	46800	5	5	5	15	46800	5	5	5	15	46800	5	5	5	15	46800	60	3,120.00	187,200.00
163	TONER CART, SAMSUNG MLT-D203E, Black	cart	-	-	-	0	0	-	-	-	0	0	-	-	-	0	0	-	-	-	0	0	0	7,280.00	-
164	TONER CART, SAMSUNG MLT-D203L, Black	cart	-	-	-	0	0	-	-	-	0	0	-	-	-	0	0	-	-	-	0	0	0	4,368.00	-

165	TONER CART, SAMSUNG MLT-D203U, black	cart	-	-	-	0	0	-	-	-	0	0	-	-	-	0	0	-	-	-	0	0	0	9,464.00	-
166	TONER CART, SAMSUNG MLT-D205E, Black	cart	-	-	-	0	0	-	-	-	0	0	-	-	-	0	0	-	-	-	0	0	0	8,736.00	-
167	TONER CART, SAMSUNG MLT-D205L, Black	cart	-	-	-	0	0	-	-	-	0	0	-	-	-	0	0	-	-	-	0	0	0	4,888.00	-
168	TONER CART, SAMSUNG SCX-D6555A, Black	cart	-	-	-	0	0	-	-	-	0	0	-	-	-	0	0	-	-	-	0	0	0	4,212.00	-
169	RIBBON CART, EPSON C13S015516 (#8750), Black, for LX-300	cart	-	-	-	0	0	-	-	-	0	0	-	-	-	0	0	-	-	-	0	0	0	76.75	-
170	RIBBON CART, EPSON C13S015531 (S015086), Black	cart	-	-	-	0	0	-	-	-	0	0	-	-	-	0	0	-	-	-	0	0	0	724.88	-
171	RIBBON CART, EPSON C13S015584 (S015327), Black	cart	-	-	-	0	0	-	-	-	0	0	-	-	-	0	0	-	-	-	0	0	0	334.88	-
172	RIBBON CART, EPSON C13S015632, Black, for LX-310	cart	-	-	-	0	0	-	-	-	0	0	-	-	-	0	0	-	-	-	0	0	0	75.92	-

B. OTHER ITEMS NOT AVAILABLE AT PS BUT REGULARLY PURCHASED FROM OTHER SOURCES (Note: Please indicate price of items)

COMMON ELECTRICAL SUPPLIES																											
1	Chargeable Flashlight	piece	22			22	13200									0	0						0	0	22	600.00	13,200.00
2	BALLAST, 18 watts	pcs	100			100	7374									0	0						0	0	100	73.74	7,374.00
3	BALLAST, 36 watts	pcs	100			100	6963									0	0						0	0	100	69.63	6,963.00
4	FLUORESCENT LIGHTING FIXTURE 1x 20W	set	100			100	32760									0	0						0	0	100	327.60	32,760.00
5	FLUORESCENT LIGHTING FIXTURE 1x 40W	set	100			100	41600									0	0						0	0	100	416.00	41,600.00
6	FUSE, 30 amperes	pcs	100			100	1035									0	0						0	0	100	10.35	1,035.00
7	FUSE, 60 amperes	pcs	100			100	2548									0	0						0	0	100	25.48	2,548.00
8	STARTER, 4-40 watts	pcs	30			30	117									0	0						0	0	30	3.90	117.00
9	Flat Cord 1.25mm	roll	1			1	2500	1			1	2500	1			1	2500	1					1	2500	4	2,500.00	10,000.00
10	FLUORESCENT LAMP, tubular, 18 watts	tube		20		20	1380									0	0						0	0	20	69.00	1,380.00
11	FLUORESCENT Starter 18W-20W	pcs		25		25	375									0	0						0	0	25	15.00	375.00
12	FLUORESCENT Starter 30W-40W	pcs		50		50	750		30	30	450			30	30	450			30	30	450			140	15.00	2,100.00	
13	Essential Bulb 18 watts	pcs	100			100	19000	100			100	19000				0	0						0	0	200	190.00	38,000.00
14	T5 28 watts with complete set tape, duct, 40mm, 50 meters length (Cray)	pcs				0	0		25		25	10000				0	0						0	0	25	400.00	10,000.00
15		roll				0	0		1	1	110					0	0		1				1	110	2	110.00	220.00

COMMON OFFICE EQUIPMENT																											
1	Wall Clock	piece	1			1	999									0	0						0	0	1	999.00	999.00
2	Water Dispenser	piece	1			1	2000									0	0						0	0	1	2,000.00	2,000.00
3	Kyocera ecosys fs-1135mfp/l	piece	1			1	78000									0	0						0	0	1	78,000.00	78,000.00
4	PRINTER, EPSON L-565, CONVERTED	piece	1			1	14000									0	0						0	0	1	14,000.00	14,000.00
5	Duplo Ink (DA 14)	pcs	10	10	10	30	30000	10	10	10	30	30000	10	10	10	30	30000	10	10	10	30	30000	120	1,000.00	120,000.00		
6	Duplo Masterol	pcs	3	3	3	9	36000	3	3	3	9	36000	3	3	3	9	36000	3	3	3	9	36000	36	4,000.00	144,000.00		
7	Canon Toner 303	pcs	1	1	1	3	9000	1	1	1	3	9000	1	1	1	3	9000	1	1	1	3	9000	12	3,000.00	36,000.00		
8	FLASH DRIVE, 32GB, USB 2.0, plug and play	piece	8			8	7200									0	0						0	0	8	900.00	7,200.00

9	PLASTIC CRATES, perforated, black	piece	200			200	60000				0	0				0	0			0	0	200	300.00	60,000.00	
COMMON OFFICE SUPPLIES																									
	BALLPOINT PEN, black	piece		5	106	111	1598.4		5	65	70	1008		5	65	70	1008		5	65	70	1008	321	14.40	4,622.40
	BALLPOINT PEN, blue	piece		5		5	72		5		5	72		5		5	72		5		5	72	20	14.40	288.00
	DOCUMENT, holder	piece			41	41	3690				0	0				0	0				0	0	41	90.00	3,690.00
	ID JACKET, with sling	piece			41	41	348.5				0	0				0	0				0	0	41	8.50	348.50
	PAPER, bond, with DSWD Letterhead/Logo, A4	ream		2		2	900		2		2	900		2		2	900		2		2	900	8	450.00	3,600.00
	PAPER, bond, with DSWD Letterhead/Logo, Legal	ream		2		2	960		2		2	960		2		2	960		2		2	960	8	480.00	3,840.00
	PAPER, manila	piece			10	10	27.5				0	0				0	0				0	0	10	2.75	27.50
	PAPER, mimeo, A4	ream		2		2	318.84		2		2	318.84		2		2	318.84		2		2	318.84	8	159.42	1,275.36
	PAPER, mimeo, Legal	ream		2		2	332.38		2		2	332.38		2		2	332.38		2		2	332.38	8	166.19	1,329.52
	FORM, Reimbursement Expense Receipt (RER)	pad		10		10	480		10		10	480		10		10	480		10		10	480	40	48.00	1,920.00
	ID Jacket, with sling	piece				0	0	250		250	500	4250	240		240	2040		240		240	240	2040	980	8.50	8,330.00
	FRAME, A4	piece				0	0		250		250	25000	40		40	4000		40		40	4000	330	100.00	33,000.00	
	Plaque	piece				0	0				0	0	40		40	28000		40		40	28000	80	700.00	56,000.00	
	Tarpaulin	piece				0	0		2		2	2000			0	0	1		1	2	2000	4	1,000.00	4,000.00	
	BALLPOINT PEN, fine point, black	piece		250		250	3600		250	250	500	7200			0	0				0	0	750	14.40	10,800.00	
	BALLPOINT PEN, fine point, blue	piece		250		250	3600		250	250	500	3600			0	0				0	0	500	14.40	7,200.00	
	STICKY, notes, 2 x 3	piece				0	0	15	15	30	600	15	15	15	45	900	15	15	15	45	900	120	20.00	2,400.00	
	FORM, Reimbursement Expense Receipt (RER)	pad		10		10	480		10		10	480		10		10	480		10		10	480	40	48.00	1,920.00
	ID Jacket, with sling	piece				0	0	238	262	500	4250	240		240	2040		240		240	240	2040	980	8.50	8,330.00	
	FRAME, A4	piece				0	0				0	0	40		40	4000		40		40	4000	80	100.00	8,000.00	
	Plaque	piece				0	0		50	50	35000	40		40	28000		40		40	28000	130	700.00	91,000.00		
	Tarpaulin	piece		1	1	2	2000			1	1	1000			0	0	1		1	1000	4	1,000.00	4,000.00		
	PAPER, fastener, plastic , 50/box	box	17	6	6	3	75	17	6	6	29	725	17	6	6	29	725	17	6	6	29	725	90	25.00	2,250.00
	SHOE, lace, black or brown	pair	60	60	60	180	1800	60	60	60	180	1800	60	60	60	180	1800	60	60	60	180	1800	720	10.00	7,200.00
	TONER CART, CANON Q2612A	cart	5			5	13850	5			5	13850	5		5	13850	5		5	13850	20	2,770.00	55,400.00		
	TONER CART, HP OPT 78A	cart	5			5	11325	5			5	11325	5		5	11325	5		5	11325	20	2,265.00	45,300.00		
	TONER CART, Use and Return Develop TNP 40	cart	1			1	13000				0	0	1		1	13000				0	0	2	13,000.00	26,000.00	
	DRUM KIT, Develop Ineo4020	kit	1			1	5520				0	0			0	0				0	0	1	5,520.00	5,520.00	
	INK CART, HP OFFICEJET PROX451dw (black)	cart	15			15	60000	10			10	40000	10		10	40000	10			10	40000	45	4,000.00	180,000.00	
	INK CART, HP OFFICEJET PROX451dw (971 yellow)	cart	10			10	41650	5			5	20825	5		5	20825	5		5	20825	25	4,165.00	104,125.00		
	INK CART, HP OFFICEJET PROX451 (971 Magenta)	cart	10			10	41650	5			5	20825	5		5	20825	5		5	20825	25	4,165.00	104,125.00		
	INK CART, HP OFFICEJET PROX451dw (971 Cyan)	cart	10			10	41650	5			5	20825	5		5	20825	5		5	20825	25	4,165.00	104,125.00		
	Stapler w/remover #35 HD-50/50R	piece	22			22	7260				0	0			0	0				0	0	22	330.00	7,260.00	

Folder Long (brown)	piece	100			100	450		100		100	450				0	0			0	0	200	4.50	900.00	
Folder Long Plastic (Assorted Color)	piece	50			50	637.5	50		50	637.5				0	0			0	0	100	12.75	1,275.00		
Shoe Lace (white)	tie	100			100	1500	100		100	1500				0	0			0	0	200	15.00	3,000.00		
Plastic box 150L sizes	piece	3			3	2400	3		3	2400		3		3	2400		3	2400	12	800.00	9,600.00			
BROTHER -DCP-T700 W (INK-BT6000- BLACK)	PCS	5			5	1950			0	0				0	0			0	0	5	390.00	1,950.00		
BROTHER -DCP-T700 W (INK-BT5000- CMY)	SET	3			3	1170			0	0				0	0			0	0	3	390.00	1,170.00		
Ballpen (Black)	box	5			5	26.25	5		5	26.25	5		5	26.25	5		5	26.25	20	5.25	105.00			
Tape, Double-sided	roll	2			2	49	4		4	98	4		4	98	2		2	49	12	24.50	294.00			
Push Pin	box	3			3	0	3		3	0	3		3	0	3		3	0	12		-			
Quick Box	pcs	15			15	0	15		15	0	15		15	0	15		15	0	60		-			
Paper Clamp (HD) small	pcs	15			15	127.5	15		15	127.5	15		15	127.5	15		15	127.5	60	8.50	510.00			
Paper Clamp (HD) big	pcs	15			15	195	15		15	195	15		15	195	15		15	195	60	13.00	780.00			
Linen Paper	ream	1			1	0	1		1	0	1		1	0	1		1	0	4		-			
Photo Paper	ream	1			1	40	1		1	40	1		1	40	1		1	40	4	40.00	160.00			
Duct Tape	roll	1			1	74.75	1		1	74.75	1		1	74.75	1		1	74.75	4	74.75	299.00			
INK CART, HP 05A (BLACK)	pcs	3			3	9600			0	0				0	0			0	0	3	3,200.00	9,600.00		
Ballpen	piece			1000	1000	7000		1000		1000	7000		1000	7000		1000	7000	4000	7.00	28,000.00				
Fastner, plastic	box			120	120	3240			0	0		120		120	3240			0	0	240	27.00	6,480.00		
Folder, plastic with slider A4	piece			270	270	1350			0	0				0	0			0	0	270	5.00	1,350.00		
Folder, plastic with slider Long	piece			200	200	1200			0	0				0	0			0	0	200	6.00	1,200.00		
Glue, all purpose, 40g	bottle			200	200	6000			0	0				0	0			0	0	200	30.00	6,000.00		
Glue, all purpose, 130g	bottle			200	200	20000			0	0		200		200	20000			0	0	400	100.00	40,000.00		
Ink, refill, permanent	bottle			44	44	3080			0	0				0	0			0	0	44	70.00	3,080.00		
Folder, plastic, long, asstd.color	piece			3000	3000	30000			0	0		3000		3000	30000			0	0	6000	10.00	60,000.00		
Shoelace ≥100cm	pair			45	45	900			0	0				0	0			0	0	45	20.00	900.00		
Tape, dcut #2, 50m	roll			7	7	3500			0	0				0	0			0	0	7	500.00	3,500.00		
Certificate Holder	piece			0	0		200		200	10000				0	0			0	0	200	50.00	10,000.00		
ID Max Binder	piece			0	0		1000		1000	9000		1000		1000	9000		1000	9000	3000	9.00	27,000.00			
GLUE, all purpose, 130 grams min.	jar	3	3	3	9	405	3	3	3	9	405	3	3	3	9	405	3	3	3	9	405	36	45.00	1,620.00
pencil, 0.5mm, 12 pcs/tube		1	1	1	3	62	1	1	1	3	62	1	1	1	3	62	1	1	1	3	62	12	20.79	249.48
BALLPOINT PEN, fine point, black		24	24	24	72	1,037	24	24	24	72	1,037	24	24	24	72	1,037	24	24	24	72	1,037	288	14.40	4,147.20
BALLPOINT PEN, fine point, blue		24	24	24	72	1,037	24	24	24	72	1,037	24	24	24	72	1,037	24	24	24	72	1,037	288	14.40	4,147.20
PAPER, fastener, plastic, 50/box		5	5	5	15	1,255	5	5	5	15	1,255	5	5	5	15	1,255	5	5	5	15	1,255	60	83.67	5,020.20
STICKY, notes, 3 x 3		7	7	7	21	872	7	7	7	21	872	7	7	7	21	872	7	7	7	21	872	84	41.50	3,486.00
STICKY, notes, 3 x 3		7	7	7	21	872	7	7	7	21	872	7	7	7	21	872	7	7	7	21	872	84	41.50	3,486.00
Indication stickers reimbursement Expense	pad			0	0	2	2	2	6	150	2	2	2	6	150	2	2	2	6	150	18	25.00	450.00	
PAPER, multi-purpose (COPY)	ream			0	0	7	8	10	25	3000	5	5	5	15	1800	5	5	15	25	3000	65	120.00	7,800.00	
PAPER, multi-purpose (COPY), Letter 8 1/2 x 11	ream			0	0	3	3	4	10	1300	2	2	2	6	780	2	2	2	6	780	22	130.00	2,860.00	
LOCKER FOR TRAP, 6	piece			0	0	15	15	15	45	1575	15	15	15	45	1575	15	15	15	45	1575	135	35.00	4,725.00	
ALCOHOL, 70%, isopropyl, 500ml	bottle			0	0	1	1	1	3	150	1	1	1	3	150	1	1	1	3	150	9	50.00	450.00	
PENCIL, mechanical, for 0.5mm lead	piece	5			5	93.6	5		5	93.6	5		5	93.6	5		5	93.6	20	18.72	374.40			

PUSH PIN, flat head type, assorted colors, 100s/case	case	5			5	187.2	5			5	187.2	5			5	187.2	5			5	187.2	20	37.44	748.80	
COLUMNAR PAD, 14 cols, 50 gsm min.	pad	1			1	43.68				0	0				0	0				0	0	1	43.68	43.68	
BALLPOINT PEN, fine point, black	piece	12		12	24	345.6			12	12	172.8	12		12	24	345.6			12	12	172.8	72	14.40	1,036.80	
FINGER, moistener	piece	4			4	72				0	0	4			4	72				0	0	8	18.00	144.00	
General Ledger	piece	1			1	80				0	0				0	0				0	0	1	80.00	80.00	
PAPER, bond, with DSWD Letterhead/Logo, A4	ream	2			2	900				0	0				0	0				0	0	2	450.00	900.00	
PAPER, Bookpaper, Color, Legal (Blue, Green, Pink, Yellow)	ream	2		2	4	2800			2	2	1400	2		2	4	2800			2	2	1400	12	700.00	8,400.00	
RECORD BOOK, 150lvs	piece	4			4	140				0	0	4			4	140				0	0	8	35.00	280.00	
SHOE, lace, black or brown	pair	100			100	1000				0	0				0	0				0	0	100	10.00	1,000.00	
STAPLE WIRE, for binding stapler, 12mm x 17mm	box	10			10	1200	10			10	1200	10			10	1200	10			10	1200	40	120.00	4,800.00	
STICKY, notes, 1 x 3	pad	15	15	15	45	810	15	15	15	45	810	15	15	15	45	810	15	15	15	45	810	180	18.00	3,240.00	
STICKY, notes, 3 x 3	pad	15	15	15	45	1125	15	15	15	45	1125	15	15	15	45	1125	15	15	15	45	1125	180	25.00	4,500.00	
FORM, Reimbursement Expense Receipt (RER)	pad	1			1	48				0	0				0	0				0	0	1	48.00	48.00	
Self Inking Stamp	piece				0	0	4			4	2800				0	0				0	0	4	700.00	2,800.00	
Ledger Binder	piece				0	0		30		30	5400	10	10	10	30	5400	10	10	10	30	5400	90	180.00	16,200.00	
Supplies Ledger Card	piece				0	0		1000		1000	6500				0	0				0	0	1000	6.50	6,500.00	
TAPE, Double-sided, 18mm, 10 meters	piece	1			1	87.75	1			1	87.75	1			1	87.75	1			1	87.75	4	87.75	351.00	
TAPE, Duct, 48mm, 10 m	piece	1			1	74.75	1			1	74.75	1			1	74.75	1			1	74.75	4	74.75	299.00	
RIBBON, nylon, manual typewriter	spool	4			4	58.16				0	0				0	0				0	0	4	14.54	58.16	
TAPE, adding machine, GSP bond	roll	12			12	93.12				0	0	12			12	93.12				0	0	24	7.76	186.24	
INK, numbering machine	bottle	4			4	455.4	4			4	455.4	6			6	683.1	6			6	683.1	20	113.85	2,277.00	
FORM, Reimbursement Expense Receipt (RER)				3		3	144			3	144			3	144				3	3	144	12	48.00	576.00	
					0	0				0	0				0	0				0	0	0		-	
					0	0				0	0				0	0				0	0	0		-	
COMMON JANITORIAL SUPPLIES																									
Laundry of dormitory beddings			1	1	1	3	6000	1	1	1	3	6000	1	1	1	3	6000	1	1	1	3	6000	12	2,000.00	24,000.00
						0	0				0	0				0	0				0	0	0		-
						0	0				0	0				0	0				0	0	0		-
CONSUMABLES																									
TONER CART, HP M402n, 26a, Black	cart	4	7	4	15	105000	4	9	9	22	154000	6	7	6	19	133000	6	7	6	19	133000	75	7,000.00	525,000.00	
TONER CART, HP MFP 225dn, 83a Black	cart	2	1	2	5	17500	2	1	2	5	17500	2	1	2	5	17500	2	1	2	5	17500	20	3,500.00	70,000.00	
EPSON T6641-44 (BLACK,CYAN,MAGENTA,YELLOW)	bottle			4	4	1100				4	4	1100	4			4	1100			4	4	1100	16	275.00	4,400.00

TONER CARTRIDGE, HP CE285A, black, for HP LaserJet P1102, P1102w, printer	cart	3	4	3	10	26551	3	4	3	10	26551	3	4	3	10	26551	3	4	3	10	26551	40	2,655.06	106,202.40
TONER CARTRIDGE, HP CE278A, black, for HP LaserJet P1566, P1606dn, M1536dnf printer	cart	3	5	3	11	33121	3	5	3	11	33121	3	5	3	11	33121	3	5	3	11	33121	44	3,011.04	132,485.76
TONER CARTRIDGE, HP Q2612A, black	cart	1	1	2	4	11465	1	1	2	4	11465	1	1	2	4	11465	1	1	2	4	11465	16	2,866.20	45,859.20
TONER CART, SAMSUNG MLD116L	cart	8	6	6	20	50000	8	6	6	20	50000	8	6	6	20	50000	8	6	6	20	50000	80	2,500.00	200,000.00
TONER CART, SAMSUNG MLT-D111L	cart	5	5	5	15	37500	5	5	5	15	37500	5	5	5	15	37500	5	5	5	15	37500	60	2,500.00	150,000.00
TONER CART, BROTHER TN2260	cart	9	6	5	20	50000	9	6	5	20	50000	9	6	5	20	50000	9	6	5	20	50000	80	2,500.00	200,000.00
TONER CART, Canon LBP6030 (85A)	cart			14	14	39200				0	0				0	0				0	0	14	2,800.00	39,200.00
TONER CART, Canon LBP2900 (12A)	cart			21	21	58800				0	0				0	0				0	0	21	2,800.00	58,800.00
TONER CART, Canon LBP6300dn (05A)	cart			10	10	30000				0	0				0	0				0	0	10	3,000.00	30,000.00
TN32	cart				0	0			2		2				0	0				0	0	2	3,200.00	6,400.00
TONER CART, Kyocera TK-1147, black	cart	2	2	2	6	22800	2	2	2	6	22800	2	2	2	6	22800	2	2	2	6	22800	24	3,800.00	91,200.00
INK BOTTLE,EPSON ECOTANK T664 BLACK	Bottle	2	2	2	6	2100	2	2	2	6	2100	2	2	2	6	2100	2	2	2	6	2100	24	350.00	8,400.00
INK BOTTLE,EPSON ECOTANK T664 cyan	Bottle	2	2	2	6	2100	2	2	2	6	2100	2	2	2	6	2100	2	2	2	6	2100	24	350.00	8,400.00
INK BOTTLE,EPSON ECOTANK T664 magenta	Bottle	2	2	2	6	2100	2	2	2	6	2100	2	2	2	6	2100	2	2	2	6	2100	24	350.00	8,400.00
INK BOTTLE,EPSON ECOTANK T664 yellow	Bottle	2	2	2	6	2100	2	2	2	6	2100	2	2	2	6	2100	2	2	2	6	2100	24	350.00	8,400.00
TONER CARTRIDGE, HP CE285A, black, for HP LaserJet P1102, P1102w, printer	cart	4	4	4	12	31861	4	4	4	12	31861	4	4	4	12	31861	4	4	4	12	31861	48	2,655.06	127,442.88
241. TONER CARTRIDGE, HP CE505A, black, for HP LaserJet P2035, P2055 printer series	cart		5		5	17952		5		5	17952		5		5	17952		5		5	17952	20	3,590.40	71,808.00
TONER CARTRIDGE, Samsung Part No. MLTD105L, for printer ML 2580n	cart	5	5	5	15	42075	5	5	5	15	42075	5	5	5	15	42075	6	6	6	18	50490	63	2,805.00	176,715.00
TONER, Konica, DiAlta, Di2510	cart	1	2	1	4	12800	1	1	1	3	9600	2	1	1	4	12800	1	2	1	4	12800	15	3,200.00	48,000.00
SHOE LACE	pair	200	200	200	600	6000	200	200	100	500	5000	200	100	100	400	4000	200	100	100	400	4000	1900	10.00	19,000.00
BALLPEN	pcs.	15	15	15	45	648	15	15	15	45	648	15	15	15	45	648	15	15	15	45	648	180	14.40	2,592.00
Black Canon 703 Toner Cartridge (Canon LBP2900)	cart				0	0		1	1	2	4000	1		1	2	4000	1		1	2	4000	6	2,000.00	12,000.00
TONER, Canon, NPG-32	cartridge	4			4	17200	4			4	17200	4			4	17200	4			4	17200	16	4,300.00	68,800.00
TONER CARTRIDGE, Samsung, ML101	cartridge	3		3	6	15600		3		3	7800	3		3	6	15600			3	3	7800	18	2,600.00	46,800.00
RIBBON, Cartridge Epson LQ-2190	piece	4			4	3600	4			4	3600	4			4	3600	4			4	3600	16	900.00	14,400.00
DRUM, Canon, NPG-32	unit			1	1	8760				0	0			1	1	8760				0	0	2	8,760.00	17,520.00
TONER, Konica, TN214	tube	2			2	6400	2			2	6400	2			2	6400	2			2	6400	8	3,200.00	25,600.00

	TONER CARTRIDGE, HP, CZ192A/93A	cart	2		2	17000	2		2	17000	2		2	17000	2		2	17000	8	8,500.00	68,000.00				
	OPT 054, OPT. TONER CART	cart	2		2	7000	2		2	7000	2		2	7000	1		1	3500	7	3,500.00	24,500.00				
	TONER CART, BROTHER TN-2060, Black	cart		6	6	8772.8			0	0		6	6	8772.8			0	0	12	1,462.14	17,545.68				
Office Equipment and Accessories																									
1	SELF INKING STAMP			1	1	800			0	0			0	0	1		1	800	2	800.00	1,600.00				
3	Conference Table (Folding table)	piece			0	0	2		2	11000			0	0			0	0	2	5,500.00	11,000.00				
4	Conference Chair	piece			0	0	8		8	12000			0	0			0	0	8	1,500.00	12,000.00				
5	Duplo Machine Maintenance	pcs			0	5000			0	5000			0	5000			0	5000	4		20,000.00				
6	Office Table, with glass top, center drawer & 3 side drawer	piece	2		2	7000			0	0			0	0			0	0	2	3,500.00	7,000.00				
7					0	0			0	0			0	0			0	0	0		-				
8					0	0			0	0			0	0			0	0	0		-				
9					0	0			0	0			0	0			0	0	0		-				
10					0	0			0	0			0	0			0	0	0		-				
Office Supplies																									
1	FORM, Reimbursement Expense Receipt (RER)	pad	8		8	384	8		8	384	8		8	384	8		8	384	32	48.00	1,536.00				
2	CELLCARD, touch mobile, 300.00	pc	1	1	1	3	900	1	1	1	3	900	1	1	1	3	900	1	1	1	3	900	12	300.00	3,600.00
3	Official Cashbook (Small Gen.Form#51)	pad	12		12	2760		5	5	10	2300		5	5	10	2300		5	5	10	2300	42	230.00	9,660.00	
4	Official Receipt	pad	20		20	4000	20		20	4000	20		20	4000	20		20	4000	80	200.00	16,000.00				
5	DBP Checkbooks	pad	15		15	12000	10		10	8000	10		10	8000	10		10	8000	45	800.00	36,000.00				
6	LBP Checkbooks	pad	20		20	16000	20		20	16000	20		20	16000	20		20	16000	80	800.00	64,000.00				
7	Warrant Registry	pc.	10		10	3750		5	5	10	3750	10		10	3750	10		10	3750	40	375.00	15,000.00			
1					0	0			0	0			0	0			0	0	0		-				
2					0	0			0	0			0	0			0	0	0		-				
3					0	0			0	0			0	0			0	0	0		-				
4					0	0			0	0			0	0			0	0	0		-				
5					0	0			0	0			0	0			0	0	0		-				
6					0	0			0	0			0	0			0	0	0		-				
7					0	0			0	0			0	0			0	0	0		-				
8					0	0			0	0			0	0			0	0	0		-				
9					0	0			0	0			0	0			0	0	0		-				
10					0	0			0	0			0	0			0	0	0		-				
Audio and visual presentation and composing equipment																									
1					0	0			0	0			0	0			0	0	0		-				
2					0	0			0	0			0	0			0	0	0		-				
3					0	0			0	0			0	0			0	0	0		-				
4					0	0			0	0			0	0			0	0	0		-				
5					0	0			0	0			0	0			0	0	0		-				
6					0	0			0	0			0	0			0	0	0		-				
7					0	0			0	0			0	0			0	0	0		-				
8					0	0			0	0			0	0			0	0	0		-				

9					0	0				0	0						0	0	0			-	
10					0	0				0	0						0	0	0			-	
Photographic or filming or video equipment																							-
1					0	0				0	0						0	0	0			-	
2					0	0				0	0						0	0	0			-	
3					0	0				0	0						0	0	0			-	
4					0	0				0	0						0	0	0			-	
5					0	0				0	0						0	0	0			-	
6					0	0				0	0						0	0	0			-	
7					0	0				0	0						0	0	0			-	
8					0	0				0	0						0	0	0			-	
9					0	0				0	0						0	0	0			-	
10					0	0				0	0						0	0	0			-	
Cleaning Equipment and Supplies																							-
1					0	0				0	0						0	0	0			-	
2					0	0				0	0						0	0	0			-	
3					0	0				0	0						0	0	0			-	
4					0	0				0	0						0	0	0			-	
5					0	0				0	0						0	0	0			-	
6					0	0				0	0						0	0	0			-	
7					0	0				0	0						0	0	0			-	
8					0	0				0	0						0	0	0			-	
9					0	0				0	0						0	0	0			-	
10					0	0				0	0						0	0	0			-	
Paper Materials and Products																							-
1					0	0				0	0						0	0	0			-	
2					0	0				0	0						0	0	0			-	
3					0	0				0	0						0	0	0			-	
4					0	0				0	0						0	0	0			-	
5					0	0				0	0						0	0	0			-	
6					0	0				0	0						0	0	0			-	
7					0	0				0	0						0	0	0			-	
8					0	0				0	0						0	0	0			-	
9					0	0				0	0						0	0	0			-	
10					0	0				0	0						0	0	0			-	
Lighting and fixtures and accessories																							-
1					0	0				0	0						0	0	0			-	
2					0	0				0	0						0	0	0			-	
3					0	0				0	0						0	0	0			-	
4					0	0				0	0						0	0	0			-	
5					0	0				0	0						0	0	0			-	
6					0	0				0	0						0	0	0			-	
7					0	0				0	0						0	0	0			-	
8					0	0				0	0						0	0	0			-	
9					0	0				0	0						0	0	0			-	

10					0	0				0	0				0	0			0	0	0			-	
	Electrical equipment and components and supplies																								
1					0	0				0	0				0	0			0	0	0			-	
2					0	0				0	0				0	0			0	0	0			-	
3					0	0				0	0				0	0			0	0	0			-	
4					0	0				0	0				0	0			0	0	0			-	
5					0	0				0	0				0	0			0	0	0			-	
6					0	0				0	0				0	0			0	0	0			-	
7					0	0				0	0				0	0			0	0	0			-	
8					0	0				0	0				0	0			0	0	0			-	
9					0	0				0	0				0	0			0	0	0			-	
10					0	0				0	0				0	0			0	0	0			-	
	Computer Supplies																								
1					0	0				0	0				0	0			0	0	0			-	
2					0	0				0	0				0	0			0	0	0			-	
3					0	0				0	0				0	0			0	0	0			-	
4					0	0				0	0				0	0			0	0	0			-	
5					0	0				0	0				0	0			0	0	0			-	
6					0	0				0	0				0	0			0	0	0			-	
7					0	0				0	0				0	0			0	0	0			-	
8					0	0				0	0				0	0			0	0	0			-	
9					0	0				0	0				0	0			0	0	0			-	
10					0	0				0	0				0	0			0	0	0			-	
	Computer Equipment and Accessories																								
1	EXTERNAL HARD DRIVE, 500gb.	pcs		4	4	12000				0	0				0	0			0	0	4	3,000.00	12,000.00		
2					0	0				0	0				0	0			0	0	0			-	
3					0	0				0	0				0	0			0	0	0			-	
4					0	0				0	0				0	0			0	0	0			-	
5					0	0				0	0				0	0			0	0	0			-	
6					0	0				0	0				0	0			0	0	0			-	
7					0	0				0	0				0	0			0	0	0			-	
8					0	0				0	0				0	0			0	0	0			-	
9					0	0				0	0				0	0			0	0	0			-	
10					0	0				0	0				0	0			0	0	0			-	
	*Other Categories																								
1					0	0				0	0				0	0			0	0	0			-	
	Transporation Rental																								
	VAN RENTAL	unit	1	1	2	14000	1	1	1	3	21000	1	1	1	3	21000	1	1	1	3	21000	11	7,000.00	77,000.00	
	SFP Implementation Monitoring (Php15,000.00/province x 4 qtrs.)	unit		1	1	15000			1	1	15000			1	1	15000			1	1	15000	4	15,000.00	60,000.00	
9	Van Rental;	unit	3	3	3	9	40500	3	3	3	9	40500	3	3	3	9	40500	3	3	3	9	40500	36	4,500.00	162,000.00

3	Quarterly Consultation With LGU's per Province	pax			186	186	334800	186			186	334800	186			186	334800	186		186	372	669600	930	1,800.00	1,674,000.00
4	Training for SOCPEN focal persons regarding data handling and Reporting	pax			0	0		66		66	118800				0	0				0	0	66	1,800.00	118,800.00	
5	Stress Management in Handling Elderly Clients	pax			0	0		66	66	118800					0	0		66	66	118800	132	1,800.00	237,600.00		
6	Capacity Building	pax			0	0			0	0	17			17	30600			17	17	30600	34	1,800.00	61,200.00		
7	Social Pension Monthly Meeting	pax	20	20	20	60	21000	20	20	20	60	21000	20	20	20	60	21000	20	20	20	60	21000	240	350.00	84,000.00
8	Regional Coordinating Monitoring Board	pax			1	1	30000			1	1	30000			1	1	30000			1	1	30000	4	30,000.00	120,000.00
	Board and Lodging for Trainings and Workshops (3 days)	pax			555	555	999000				0	0				0	0				0	0	555	1,800.00	999,000.00
	AM Snack	pax	1470		1470	110250				0	0	1470			1470	110250				0	0	2940	75.00	220,500.00	
	Breakfast/Lunch/Dinner	pax	1470		1470	294000				0	0	1470			1470	294000				0	0	2940	200.00	588,000.00	
	PM Snack	pax	1470		1470	110250				0	0	1470			1470	110250				0	0	2940	75.00	220,500.00	
1	Orientation of Newly hired workers on DSWD Vision, Mission statements and Organizational Outcomes, Thrust and priorities, DBM and COA Directives and circulars 3 batches	board and lodging			154.00	154.00	277,200.00			144.00	144.00	259,200.00			140.00	140.00	252,000.00				-	-	438.00	1,800.00	788,400.00
2	Seminar on Strengthening Excellence in Human Resource Actions [SEHRA] -PSB, HRMDD Staff and Resource Person	board and lodging			48.00	48.00	86,400.00				-	-				-	-				-	-	48.00	1,800.00	86,400.00
3	Measuring HR Effectiveness • HRMDD Staff and Resource Person				21.00	21.00	37,800.00				-	-				-	-				-	-	21.00	1,800.00	37,800.00
4	Core Group of Specialist (GCS) Technical Sharing Session					-	-	33.00		33.00	59,400.00		33.00		33.00	59,400.00		33.00		33.00	33.00	59,400.00	99.00	1,800.00	178,200.00
5	Orientation and Consultation of Agency Field Instructors (AFIs) with division Chiefs/Section/Unit Heads and programs focals on student training programs (stp)					-	-	35.00		35	63,000.00					-	-	40.00		40.00		72,000.00	75.00	1,800.00	135,000.00
6	Leadership and Management Certification Program for Supervisors, Middle and First-Line Managers and Middle managers/First-Line Managers				360.00	360.00	648,000.00				-	-				-	-				-	-	360.00	1,800.00	648,000.00
7	Training of Trainers on Comm. Resilience Model for DSWD XI Social Workers				135.00	135.00	243,000.00				-	-				-	-				-	-	135.00	1,800.00	243,000.00

8	HRMDD Staff Quarterly Meeting (1st Quarter, 2nd Quarter, 3rd Quarter, 4th Quarter)				22.00	22.00	7,700.00		22.00		22.00	7,700.00			22.00	22.00	7,700.00			22.00	22.00	7,700.00	88.00	350.00	30,800.00	
1	Character Building Program				-	-			-	-					12.00		12.00	30,000.00			12.00	2,500.00		30,000.00		
2	Career Pathing				-	-		100.00		100.00	35,000.00						-	-			100.00	350.00		35,000.00		
3	RCAT (1st Semester and 2nd Semester)	pax			-	-		1,500.00	1,500.00	525,000.00							1,500.00	1,500.00	525,000.00		3,000.00	350.00		1,050,000.00		
4	Salamat Paalam Po	pax	1,500.00			1,500.00	525,000.00			-	-						-	-			1,500.00	350.00		525,000.00		
5	Travel Incentive (Plane Fare)				-	-				-	-						10.00	10.00	150,000.00		10.00	15,000.00		150,000.00		
	per diem																40.00	40.00	32,000.00		40.00	800.00		32,000.00		
	other expenses																10.00	10.00	15,000.00		10.00	1,500.00		15,000.00		
6	Wellness Program				-	-				-	-						-	-			-	-		58,000.00		
7	APE				-	-				-	-				150.00		150.00	52,500.00			150.00	350.00		52,500.00		
8	Drug Test				-	-				-	-				1,500.00		1,500.00	450,000.00			1,500.00	300.00		450,000.00		
9	Testing	per booklet & per sheet			-	-				-	-				160.00		160.00	32,000.00			160.00	200.00		32,000.00		
10	Sports Fest				-	-				-	-						-	-			-	-		58,000.00		
1	DSPMS Assessment & Checkpoint				-	-		550.00		550.00	192,500.00						-	-			550.00	350.00		192,500.00		
2	PMT Quarterly Meeting			60.00		60.00	21,000.00			-	-						-	-			60.00	350.00		21,000.00		
1	MONTHLY MEETING (Cater, 2 meals, 2 snacks)	head			0	0	32	32	32	96	33600	32	32	32	96	33600	32	32	32	96	33600	288	350.00		100,800.00	
2	STAFF DEV (with accomodation, 2 days 1 night, 3 meals 2 snacks)	head			0	0		32		32	57600				0	0		32		32	57600	64	1,800.00		115,200.00	
1	Procurement Section Semestral Meeting	pax			0	0		10		10	3500				0	0		10		10	3500	20	350.00		7,000.00	
	8.1 Stakeholders Qtrly. Meeting (77 pax x Php1,800.00 x 4 qtrs.)	pax			77	77	138600		77	77	138600				77	77	138600			77	77	138600	308	1,800.00		554,400.00
	8.2 Annual SFP PIR (275 pax x Php1,800.00 x 1 day)	pax			0	0				0	0			275	275	495000				0	0	275	1,800.00		495,000.00	
	8.3 Orientation on C/MAM/MAM (255 pax x Php1,800.00 x 2 days)	pax			0	0				0	0			510	510	918000				0	0	510	1,800.00		918,000.00	
	Internet Expenses				0	0				0	0				0	0				0	0	0			-	
	Internet Expenses	lot	7	7	7	21	31500	7	7	7	21	31500	7	7	7	21	31500	7	7	7	21	31500	84	1,500.00	126,000.00	
	Internet	lot	1	1	1	3	87000	1	1	1	3	87000	1	1	1	3	87000	1	1	1	3	87000	12	29,000.00	348,000.00	
	Telephone/Postpaid Plan/Landline				0	0				0	0				0	0				0	0	0			-	
	Telephone-Landline	lot	1	1	1	3	75000	1	1	1	3	75000	1	1	1	3	75000	1	1	1	3	75000	12	25,000.00	300,000.00	
	Telephone/Postpaid Plan/Landline	lot	1	1	1	3	6000	1	1	1	3	6000	1	1	1	3	6000	1	1	1	3	6000	12	2,000.00	24,000.00	
	Rents - Building and Structures																									
	Nabunturan, Compostela Valley Province	lot	1	1	1	3	30000	1	1	1	3	30000	1	1	1	3	30000	1	1	1	3	30000	12	10,000.00	120,000.00	
	Mati City, Davao Oriental	lot	1	1	1	3	30000	1	1	1	3	30000	1	1	1	3	30000	1	1	1	3	30000	12	10,000.00	120,000.00	
	Tagum City, Davao Del Norte	lot	1	1	1	3	30000	1	1	1	3	30000	1	1	1	3	30000	1	1	1	3	30000	12	10,000.00	120,000.00	

	Digos City, Davao Del Sur	lot	1	1	1	3	30000	1	1	1	3	30000	1	1	1	3	30000	1	1	1	3	30000	12	10,000.00	120,000.00
	Davao City	lot	1	1	1	3	30000	1	1	1	3	30000	1	1	1	3	30000	1	1	1	3	30000	12	10,000.00	120,000.00
	Malita, Davao Occidental	lot	1	1	1	3	30000	1	1	1	3	30000	1	1	1	3	30000	1	1	1	3	30000	12	10,000.00	120,000.00
1	Davao Del Norte	lot	1	1	1	3	81900	1	1	1	3	81900	1	1	1	3	81900	1	1	1	3	81900	12	27,300.00	327,600.00
2	Davao Occidental	lot	1	1	1	3	75000	1	1	1	3	75000	1	1	1	3	75000	1	1	1	3	75000	12	25,000.00	300,000.00
3	Compostela Valley	lot	1	1	1	3	75000	1	1	1	3	75000	1	1	1	3	75000	1	1	1	3	75000	12	25,000.00	300,000.00
4	Davao City	lot	1	1	1	3	80388	1	1	1	3	80388	1	1	1	3	80388	1	1	1	3	80388	12	26,796.00	321,552.00
	Services																								
	Janitorial Services	lot	7	7	7	21	0	7	7	7	21	0	7	7	7	21	0	7	7	7	21	0	84		384,000.00
	Janitorial	lot	1	1	1	3	135000	1	1	1	3	135000	1	1	1	3	135000	1	1	1	3	135000	12	45,000.00	540,000.00
	Security	lot	1	1	1	3	135000	1	1	1	3	135000	1	1	1	3	135000	1	1	1	3	135000	12	45,000.00	540,000.00
3	Janitorial Services		8	8	8	24	392	8	8	8	24	392	8	8	8	24	392	8	8	8	24	392	96		1,565,888.00
4	Security Services		23	23	23	69	1227	23	23	23	69	1227	23	23	23	69	1227	23	23	23	69	1227	276		4,902,194.00
9						0	0				0	0				0	0				0	0	0		-
10						0	0				0	0				0	0				0	0	0		-
	C. TOTAL (A + B):																								53,258,156.92
	D. ADDITIONAL PROVISION																								5,325,815.69
	E. GRAND TOTAL (C + D)																								58,583,972.61
	F. APPROVED BUDGET BY THE																								
	G. MONTHLY CASH																								
	G.1 Available at Procurement Service					3E+06					2E+06					2E+06					2E+06				8779441.56
	G.2 Other Items not available at PS					2E+07					8E+06					7E+06					8E+06				37492756.36
	TOTAL MONTHLY CASH					2E+07					1E+07					9E+06					9E+06				46272197.92

*Other categories that are not indicated herein

**Prices are FOB Manila/Applicable for items under A.

We hereby warrant that the total amount reflected in this Annual Supplies/ Equipment Procurement Plan to procure the listed common-use supplies, materials and equipment has been included in or is within our approved budget for the year.

Prepared by:

Certified Funds Available /
Certified Appropriate Funds Available:

Approved by:

Unit Head (counter sign by the one who prepared)

MIA DULCE CORAZON S. VERGARA

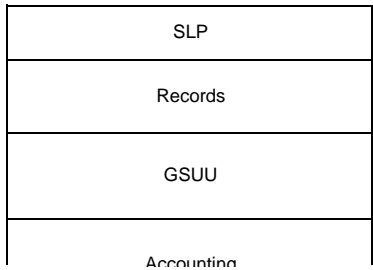
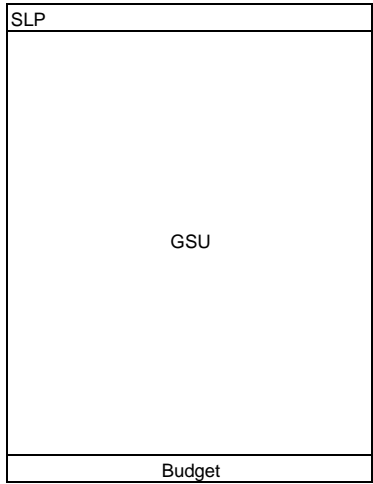
MA. VILIA L. VIGIL

Budget Officer

Assistant Regional Director for Administration

Date Prepared:

records



Accounting

Trafficking/ SFP

SOCPEN

SLP 11 pcs

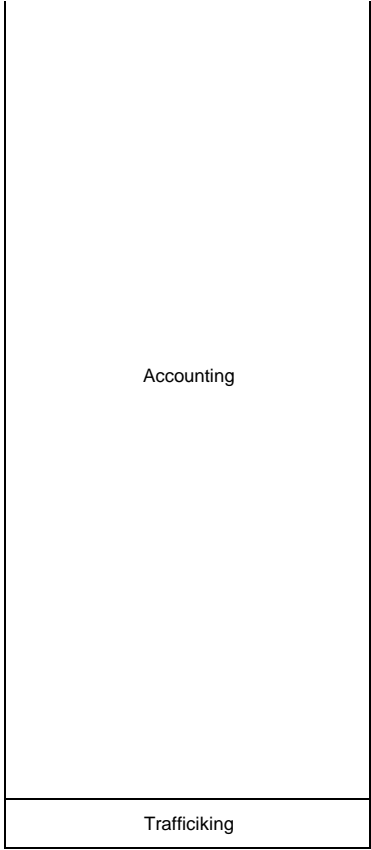
SLP

4Ps

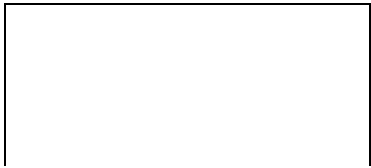
Records

Personnel

Budget



GSU



SOCPEN

4Ps

Records

Cash

Budget

Accounting

-

Procurement
SFP

SOCPEN
4Ps

Accounting

CASH

Socpen

tara

SFP
SocPen

tara

accounting

trafficking

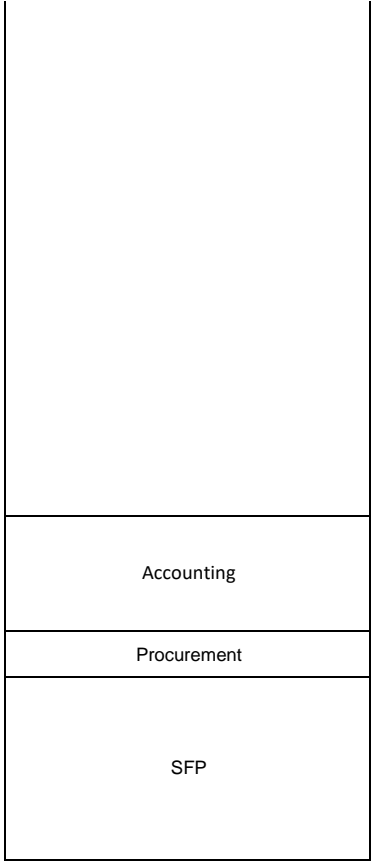
trafficking
SFP

trafficking
TARA

SOCPEN

SLP

HRDB



SLP

4Ps

4Ps

SLP

SLP

